

Component Specifications

**Part Number
5F100-xxx**

Opt-X® Adapter Plates

APPLICATION

These plates fit perfectly onto Leviton's line of fiber wall- or rack-mount Opt-X enclosures and Leviton's multimedia adapter bracket. For use with ST®, FC, SC, LC, MT-RJ, QuickPort® snap-in connector applications. Loaded and unloaded adapter plates available.

FEATURES

- Offers flexibility in adding or changing connector style
- Adapter Plates feature multiple style adapters
- Plastic plungers allow for quick tool-less installation

STANDARDS COMPLIANCE

Meets all applicable standards. Compliant with TIA/EIA-568-B.

PHYSICAL SPECIFICATIONS

Dimensions: 1.25"H x 4.94"W x .06"D (empty)
 Materials: Constructed of 16 gauge steel, powder coated black. Blank adapter plates are made of plastic or metal.
 Couplings: Supports ST, SC, LC, MT-RJ adapters and QuickPort snap-In connectors for FC, F-type and BNC.

DESIGN CONSIDERATIONS

- Arrange adapter plates to allow for future growth
- Adapters available in ST, FC, LC, SC, MT-RJ and QuickPort styles

WARRANTY INFORMATION

For a copy of Leviton product warranties, log on to www.levitonvoicedata.com/warranty.

TYPICAL SPECIFICATION

The fiber optic rack-/wall-mount Opt-X adapter plate shall provide 6, 8 or 12 ports for ST, FC, SC, LC, MT-RJ and Quick-Port® connectors. The adapter plates shall be compliant with TIA/EIA-568-B. The Adapter Plates shall accommodate SC, FC, ST, LC, MT-RJ and QuickPort adapters. The metal mounting plates shall be made of 16 gauge steel, powder coated black.

ELECTRONIC FILES

For CAD files, Typical Specs, or Dimensional Line Art (.DXF, .DWG, MS-DOS.eps or .TXT), log on to www.levitonvoicedata.com.



5F100-1ST, -6ZT



5F100-8PF, -8ZF



5F100-8ST, -8ZT



5F100-OST



5F100-12P, -12Z, -12A



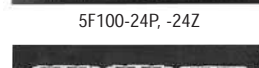
5F100-NST



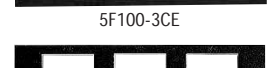
5F100-24P, -24Z



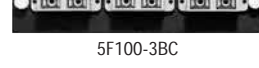
5F100-3CE



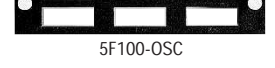
5F100-3BC



5F100-OSC



5F100-3SC, -3ZC



5F100-0MT



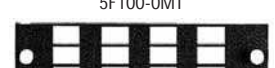
5F100-6BC, -6AC



5F100-012



5F100-6SC, -6ZC



5F100-6QP



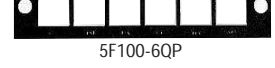
5F100-6MC



5F100-BLK



5F100-12M



5F100-BPP



5F100-6PF, -6ZF



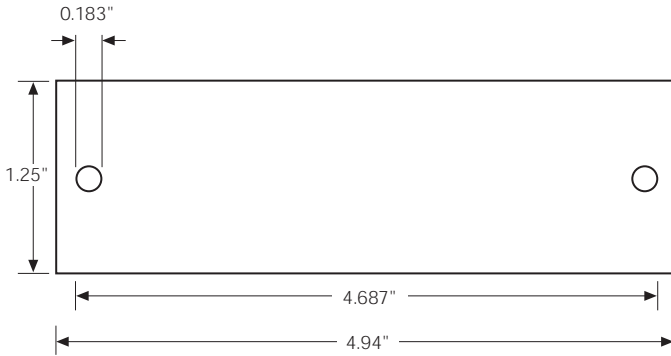
Blank adapter plate

Opt-X Adapter Plates

Part Number
5F100-xxx

DIMENSIONAL LINE ART

See ELECTRONIC FILES for CAD images
(.DXF, .DWG, MS-DOS.EPS)



LOADED FIBER MOUNTING PLATES	
Description	Part No.
6-Pack ST MM, (6-fiber) phos. bronze sleeve	5F100-1ST
6-Pack ST SM, (6-fiber) zirconia ceramic sleeve	5F100-6ZT
8-Pack ST MM, (8-fiber) phos. bronze sleeve	5F100-8ST
8-Pack ST SM, (8-fiber) zirconia ceramic sleeve	5F100-8ZT
6-Pack FC MM, (6-fiber) phos. bronze sleeve	5F100-6PF
6-Pack FC SM, (6-fiber) zirconia ceramic sleeve	5F100-6ZF
8-Pack FC MM, (8-fiber) phos. bronze sleeve	5F100-8PF
8-Pack FC SM, (8-fiber) zirconia ceramic sleeve	5F100-8ZF
3-Pack Duplex SC MM, (6-fiber) beige, phos. bronze sleeve	5F100-3BC
3-Pack Duplex SC SM, (6-fiber) blue, phos. bronze sleeve	5F100-3SC
3-Pack Duplex SC SM, (6-fiber) blue, zirconia ceramic sleeve	5F100-3ZC
6-Pack Duplex SC MM, (12-fiber) beige, phos. bronze sleeve	5F100-6BC
6-Pack Duplex SC SM, (12-fiber) blue, phos. bronze sleeve	5F100-CSC
6-Pack Duplex SC SM, (12-fiber) blue, zirconia ceramic sleeve	5F100-6ZC
6-Pack MT-RJ MM, (12-fiber) beige, dual-polarity	5F100-6MC
12-Pack MT-RJ MM, (24-fiber) beige, dual polarity	5F100-12M
6-Pack Duplex LC MM, (12-fiber) beige, phos. bronze sleeve	5F100-12P
6-Pack Duplex LC SM, (12-fiber) blue, zirconia ceramic sleeve	5F100-12Z
6-Pack Quad LC MM, (24-fiber) beige, phos. bronze sleeve	5F100-24P
6-Pack Quad LC SM (24-fiber) blue, zirconia ceramic sleeve	5F100-24Z
6-Pack Duplex LC MM, (12-fiber) aqua, zirconia ceramic sleeve	5F100-12A
6-Pack Duplex SC MM, (12-fiber) aqua, zirconia ceramic sleeve	5F100-6AC

UNLOADED PRE-PUNCHED FIBER MOUNTING PLATES - ADAPTER PLATES NOT INCLUDED	
Description	Part No.
6-Pack ST or FC	5F100-OST
8-Pack ST or FC	5F100-NST
3-Pack Duplex SC (6-fiber) or Quad LC (12-fiber)	5F100-3CE
6-Pack Duplex SC (12-fiber) or Quad LC (24-fiber)	5F100-OSC
6-Pack MT-RJ (12-fiber) or Duplex LC (12-fiber)	5F100-OMT
12-Pack MT-RJ (24-fiber)	5F100-012
6-Pack QuickPort Connector	5F100-6QP
Blank, metal	5F100-BLK
Blank, plastic	5F100-BPP