



All NH fuse links incorporate a blown fuse indicator.

Littelfuse European style NH fuse links are designed for the protection of conductors and motors. The gL-gG characteristic fuse links are generally used to protect cables and installation lines from overload and short circuits. The aM characteristic fuse links are used for the short circuit protection of motors and switchgear. They are available in NH00C to NH3 sizes up to 630 amperes.

SPECIFICATIONS

Standards: DIN 43.620, IEC 269-2-1

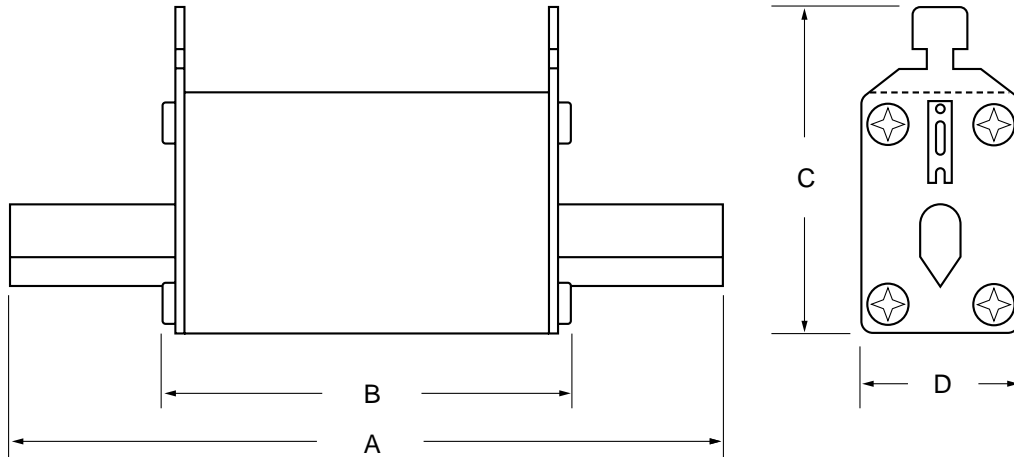
Approvals: VDE

Example part number: *NH1CG25* (size, characteristic and amperage)

Size	Current Range	Voltage (AC/DC)	Interrupting Rating	Nominal Frequency	Selectivity
00C	2A up to 100A	500V/440V	120kA/25kA	45 - 62 Hz	1:1 25
00	2A up to 160A	500V/440V	120kA/25kA	45 - 62 Hz	1:1 25
0	6A up to 160A	500V/440V	120kA/25kA	45 - 62 Hz	1:1 25
1C	25A up to 160A	500V/440V	120kA/25kA	45 - 62 Hz	1:1 25
1	40A up to 250A	500V/440V	120kA/25kA	45 - 62 Hz	1:1 25
2C	40A up to 250A	500V/440V	120kA/25kA	45 - 62 Hz	1:1 25
2	40A up to 400A	500V/440V	120kA/25kA	45 - 62 Hz	1:1 25
3C	100A up to 400A	500V/440V	120kA/25kA	45 - 62 Hz	1:1 25
3	425A up to 630A	500V/440V	120kA/25kA	45 - 62 Hz	1:1 25

Amperage	gL-gG 500V					aM 500V			
	NH00C/NH00	NH0	NH1C/NH1	NH2C/NH2	NH3C/NH3	NH00M	NH1	NH2	NH3
2	NH00CG2	—	—	—	—	NH00M2	—	—	—
4	NH00CG4	—	—	—	—	NH00M4	—	—	—
6	NH00CG6	NH0G6	—	—	—	NH00M6	—	—	—
10	NH00CG10	NH0G10	—	—	—	NH00M10	—	—	—
16	NH00CG16	NH0G16	—	—	—	NH00M16	—	—	—
20	NH00CG20	NH0G20	—	—	—	NH00M20	—	—	—
25	NH00CG25	NH0G25	NH1CG25	—	—	NH00M25	—	—	—
32	NH00CG32	NH0G32	NH1CG32	—	—	NH00M32	—	—	—
35	NH00CG35	NH0G35	NH1CG35	—	—	NH00M35	—	—	—
40	NH00CG40	NH0G40	NH1CG40	NH2CG40	—	NH00M40	—	—	—
50	NH00CG50	NH0G50	NH1CG50	NH2CG50	—	NH00M50	—	—	—
63	NH00CG63	NH0G63	NH1CG63	NH2CG63	—	NH00M63	NH1M63	—	—
80	NH00CG80	NH0G80	NH1CG80	NH2CG80	—	NH00M80	NH1M80	—	—
100	NH00CG100	NH0G100	NH1CG100	NH2CG100	—	NH00M100	NH1M100	—	—
125	NH00G125	NH0G125	NH1CG125	NH2CG125	—	NH00M125	NH1M125	NH2M125	—
160	NH00G160	NH0G160	NH1CG160	NH2CG160	—	NH00M160	NH1M160	NH2M160	—
200	—	—	NH1G200	NH2CG200	—	—	NH1M200	NH2M200	—
224	—	—	NH1G224	NH2CG224	—	—	NH1M224	NH2M224	—
250	—	—	NH1G250	NH2CG250	—	—	NH1M250	NH2M250	—
300	—	—	—	NH2G300	—	—	—	NH2M300	—
315	—	—	—	NH2G315	NH3CG315	—	—	NH2M315	NH3M315
355	—	—	—	NH2G355	NH3CG355	—	—	NH2M355	NH3M355
400	—	—	—	NH2G400	NH3CG400	—	—	NH2M400	NH3M400
425	—	—	—	—	NH3G425	—	—	—	—
500	—	—	—	—	NH3G500	—	—	—	NH3M500
630	—	—	—	—	NH3G630	—	—	—	NH3M630

NH FUSE LINK DIMENSIONS



Size	Current Range	Dimensions (mm)			
		A	B	C	D
00C	2-100A	78.00	54.00	51.30	20.00
00	2-160A	78.00	54.00	56.40	30.00
0	2-160A	123.95	70.11	53.34	30.00
1C	25-160A	135.00	75.00	56.40	30.00
1	63-250A	135.00	75.00	64.30	40.00
2C	40-250A	150.00	75.00	64.26	40.00
2	125-400A	150.00	75.00	74.20	50.00
3C	315-400A	150.00	75.00	74.20	50.00
3	315-630A	150.00	75.00	87.37	71.88

NH BASES / DISCONNECTS

FUSE BASES

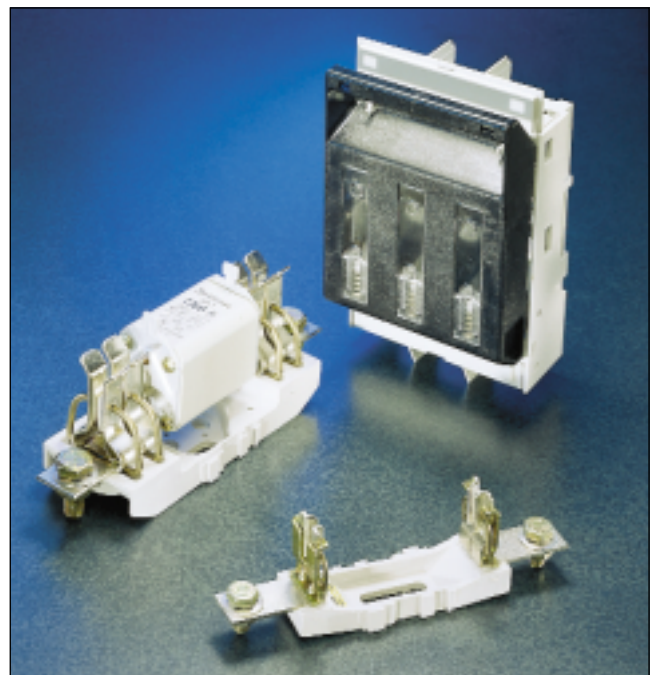
Part No.	Size	Rating	Connection
NHB00B	00	690V/160A	Bolt
NHB00C	00	690V/160A	V-Clamp
NHB1B	1	690V/250A	Bolt
NHB2B	2	690V/400A	Bolt
NHB3B	3	690V/630A	Bolt

All fuse bases are single pole and gangable.

FUSE DISCONNECTS

Part No.	Size	Rating	Connection
NHFC00B	C00	690V/160A	Bolt
NHFS0B	0	690V/160A	Bolt
NHFS1B	1	690V/250A	Bolt
NHFS2B	2	690V/400A	Bolt
NHFS3B	3	690V/630A	Bolt

All disconnects are 3 pole.



Contact factory for dimensional information.