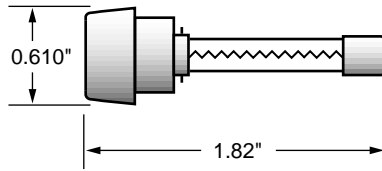




LGR Fuses

Fast Acting ■ 300 VAC

Used as in-line protection for fluorescent fixtures, this fast acting fuse is ideal for increasing the safety and reliability of lighting fixtures.



SPECIFICATIONS

Voltage rating: 300 volts AC

Maximum Interrupting Rating: 10,000A

Approvals: UL Listed (File No. E10480)
CSA Certified

AMPERE RATINGS

1/2	2	5	9
1	2 1/2	6	10
1 1/2	3	7	12
1 3/4	4	8	15

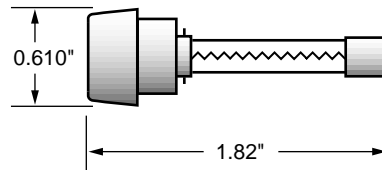
Example part number (series & amperage): LGR 1-1/2



LMF Fuses

Time-Delay ■ 300 VAC

Perfect for use in lighting systems, this 300 VAC time-delay fuse is designed to handle ballast transformer inrush currents.



SPECIFICATIONS

Voltage rating: 300 volts AC

Maximum Interrupting Rating: 10,000A

Approvals: UL Listed (File No. E10480)
CSA Certified

AMPERE RATINGS

3/4	1	1 1/4	2	3	4	7
1	1 1/4	2	2 1/2	3 1/4	5	8
1 1/4	1 3/4	2 1/2	3 1/2	4 1/2	6 1/4	10

Example part number (series & amperage): LMF 2-1/2



LHR Fuse Holder

Used as in-line protection for fluorescent fixtures, the Littelfuse LGR and LMF series fuses and LHR holder offer increased safety and reliability to lighting systems. On a 277 volt system, a fault occurring in an un-fused fixture could take out the entire branch circuit affecting up to 100 fixtures. This could cause safety problems as well as shut down operations.

By individually fusing fixtures, these problems will be avoided. The added benefits of this is the ability to quickly identify the problem fixture and reduce the repair time.

Fuse holders are rated up to 10 amperes at 300 volts and are equipped with 7" 18 AWG leads. Order part number LHR 000 for two leads, and part number LHR 001 for one lead and one terminal for insertion of 18 AWG ballast lead.

SPECIFICATIONS

Voltage rating: 300 volts AC

Ampere Rating: LHR 000: 10A
LHR 001: 10A

Approvals: UL Recognized

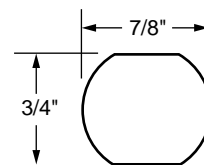
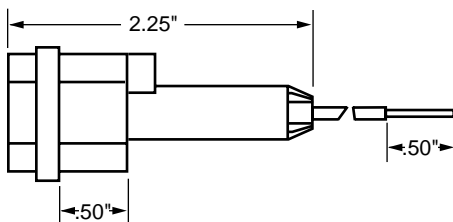
Flammability rating: 94VO

Example part number: LHR 000

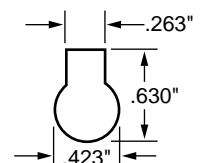
MOUNTING INFORMATION

LHR 001/LHR 000 will fit keyhole punch or .875" knock-out hole. Anti-rotation feature is provided when used with keyhole punch.

A "U-shaped" clip is available for panel mounting (packaged 10 clips per bag): Order part number LHR OCA.



Knock-out Hole



Keyhole Punch