

IDSR Series Indicator™ POWR-PRO® Class RK5 600 V AC/DC • Time-Delay • 1/10 – 600 Amperes



SPECIFICATIONS

Voltage Ratings:

AC: 600 Volts; DC: 600 Volts
(Min. 75 volts AC/DC required for indication)

Interrupting Ratings:

AC: 200,000 amperes rms symmetrical
300,000 amperes rms symmetrical
(Littelfuse self-certified)
DC: 20,000 amperes

Ampere Range:

1/10 – 600 amperes

Approvals:

Standard 248-12 and UL 198M, Class RK5
UL Listed (File No: E81895)
CSA Certified (File No: LR29862)
MSHA 600 Volt Listing

APPLICATIONS

All general-purpose circuits,
Motors, Transformers, Solenoids,
Fluorescent lighting, All system
components with high inrush
currents

Example part number

(series & amperage):
IDSR030 for 30 Amp. or
IDSR02.5 for 2 1/2 Amp. etc

Note: All fuses rated 1 amp and
above are Indicator™ fuses.

Recommended Fuse Blocks:
see Documents No. [9551](#) or [7841](#)

The Littelfuse IDSR Indicator™ fuse is the first indicating power fuse ever. Its solid-state design provides state-of-the-art reliability; it will forever change the way you look at modern circuit protection.

Money is wasted each time a circuit opens and halts production. Thousands of dollars can be lost with every minute spent testing to discover the cause.

The Littelfuse IDSR Indicator™ fuse offers you a better way. Just a simple glance at the IDSR Indicator's window tells which circuit is open. The circuit can be tested and any problem corrected without unnecessary delay. No time wasted finding the faulted circuit. No system damage. And no costly down time.

AMPERE RATINGS:

| | | | | | |
|------|-------|------|------|-----|-----|
| .100 | 1.125 | 3.2 | 9 | 50 | 200 |
| .125 | 1.25 | 3.5 | 10 | 60 | 225 |
| .150 | 1.4 | 4 | 12 | 70 | 250 |
| .200 | 1.5 | 4.5 | 15 | 75 | 300 |
| .250 | 1.6 | 5 | 17.5 | 80 | 350 |
| .300 | 1.8 | 5.6 | 20 | 90 | 400 |
| .400 | 2 | 6 | 25 | 100 | 450 |
| .500 | 2.25 | 6.25 | 30 | 110 | 500 |
| .600 | 2.5 | 7 | 35 | 125 | 600 |
| .800 | 2.8 | 7.5 | 40 | 150 | |
| 1 | 3 | 8 | 45 | 175 | |

FEATURES/BENEFITS

- **Patented design fuses** — The first totally new dual-element time-delay Class RK5 fuses in 10 years. They look different because they are different! Even the Littelfuse SLO-BLO® fuse, the fuse that set new standards for dual-element fuses when it was introduced in 1984, cannot match the performance of POWR-PRO® Indicator™ fuses.
- **Pinpoint open fuses immediately** — A glance at the window tells if the fuse has blown. If the window is dark, the fuse has opened. It's that simple. No fuse testing required.
- **Reduce down-time** — Machine operators can immediately determine that there is an open fuse and request maintenance personnel to bring the correct replacement.
- **Superior time delay** — POWR-PRO® Indicator™ fuses provide superior time delay to override current surges without sacrificing protection for sustained overloads. This superior time delay is achieved by a remarkable advance in the science of fuse design. Littelfuse-patented leading edge metallurgy eliminates all moving parts in a true dual-element fuse.

IDSR Series Indicator™ POWR-PRO® Class RK5 600 V AC/DC • Time-Delay • 1/10 – 600 Amperes

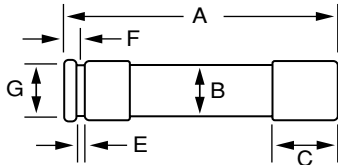


FIG. 1

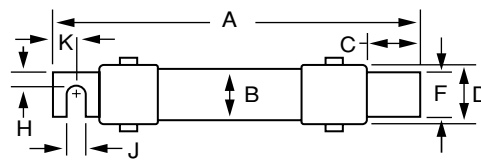
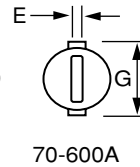


FIG. 2



| Amperes | Refer to FIG. No. | A | B | C | D | E | F | G | H | J | K |
|-----------|-------------------|-------|------|------|------|-----|------|-------|------|------|------|
| 1/10 – 30 | 1 | 127.0 | 19.1 | 15.9 | 20.6 | 2.4 | 4.8 | 15.9 | — | — | — |
| 35 – 60 | 1 | 139.7 | 25.4 | 15.9 | 27.0 | 2.4 | 6.4 | 22.2 | — | — | — |
| 70 – 100 | 2 | 200.0 | 31.8 | 27.0 | 33.3 | 3.2 | 19.1 | 38.1 | 6.4 | 7.1 | 12.7 |
| 110 – 200 | 2 | 244.5 | 44.5 | 37.3 | 46.8 | 4.8 | 28.6 | 53.2 | 11.1 | 7.1 | 17.5 |
| 225 – 400 | 2 | 295.3 | 63.5 | 50.8 | 65.9 | 6.4 | 41.3 | 72.2 | 15.9 | 10.3 | 23.8 |
| 450 – 600 | 2 | 339.7 | 76.2 | 61.1 | 78.6 | 6.4 | 50.8 | 84.93 | 19.1 | 13.5 | 28.6 |

