

## Pin and Sleeve Accessories

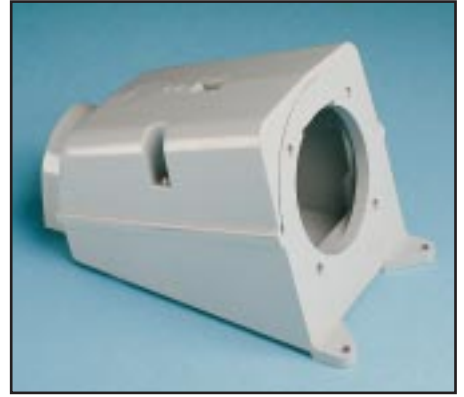
### Back Boxes

We make available a full line of back boxes. Cast aluminum back boxes are available for 20, 30, 60 and 100 amp devices. Thermoplastic back boxes are available for 20, 30 and 60 amp devices.

These back boxes conform to IEC 309-1 and 309-2 standards when inlets and receptacles are properly installed. They are durable, impact-resistant, and corrosion-resistant, and are designed for long service life in a variety of hostile environments. Thermoplastic and aluminum back boxes come with mounting kits for both splashproof and watertight receptacles and inlets.



*Cast aluminum model*



*Thermoplastic model*

### Closure Caps

We also make available closure caps which provide watertight or splashproof protection to disconnected plugs and inlets. These are made of nylon for maximum resistance to corrosion and abuse.



*Closure caps are available in watertight and splashproof versions.*

### Lockout/Tagout Shield for Pin and Sleeve Devices

The lockout/tagout shield prohibits the connection of a plug to a connector or receptacle, and an inlet to a connector. Available in high-visibility yellow and made of Valox 357, it is equipped with its own integral outdoor-approved corrosion-resistant lock and key. When installed correctly, the lockout/tagout shield complies with OSHA Lockout/Tagout Requirements. It fits all IEC 309-1 and 309-2 manufacturers' pin and sleeve plugs and inlets, from 20 amp to 100 amp.



*Fits all IEC 309-1 and 309-2 plugs and inlets from 20 Amp to 100 Amp.*

### Adapter Plate Kits

Metal adapter plates are provided with gaskets designed for use with these receptacles and inlets that will be mounted on Appleton, Crouse-Hinds and Hubbell back boxes.



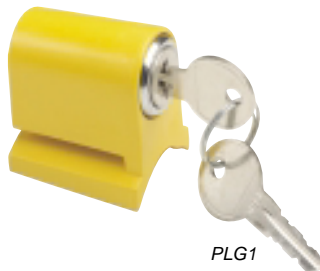
BB60P



BB30C



BB320C



PLG1

## Pin and Sleeve Accessories

### Cast Aluminum Back Boxes

APPLICATION	CAT. NO.
20 Amp, 3-wire	BB320C
20 Amp, 4-, 5-wire	BB420C
All 30 Amp	BB30C
All 60 Amp	BB60C
All 100 Amp	BB100C

### Thermoplastic Back Boxes

APPLICATION	CAT. NO.
20 Amp, 3-wire	BB320P*
20 Amp, 4-wire	BB420P*
20 Amp, 5-wire	BB520P*
30 Amp, 3-, 4-wire	BB3430P*
30 Amp, 5-wire	BB530P*
All 60 Amp	BB60P

\*For use with 20A and 30A Splashproof devices only.

### Closure Caps

APPLICATION	WATERTIGHT CAT. NO.	SPLASHPROOF CAT. NO.
20 Amp, 3-wire	PC320	SPC320
20 Amp, 4-wire	PC420	SPC420
20 Amp, 5-wire	PC520	SPC520
30 Amp, 3-, 4-wire	PC3430	SPC3430
30 Amp, 5-wire	PC530	SPC530
All 60 Amp	PC60	---
All 100 Amp	PC100	---

### Lockout/Tagout for Pin and Sleeve Devices

APPLICATION	CAT. NO.
Can be used for any IEC 309-1 and 309-2 pin and sleeve plugs and connectors	PLG1

### Adapter Kits for Hubbell Back Boxes

APPLICATION	CAT. NO.
20 Amp, 3-wire	AP320H
20 Amp, 4-, 5-wire	AP420H
All 30 Amp	AP30H
All 60 Amp	AP60H
All 100 Amp	AP100H

### Adapter Kits for Appleton and Crouse-Hinds Back Boxes

APPLICATION	CAT. NO.
20 Amp, 3 wire	AP320C
20 Amp, 4-, 5-wire	AP420C
All 30 Amp	AP30C
All 60 Amp	AP60C
All 100 Amp	AP100C

## Dimensions for Cast Aluminum Back Boxes

### 20 AMP Cast Aluminum

	A	B	C	D	E	F	G	H
inch	5.00	4.25	3.38	4.20	3.63	1.44	1.00	—
mm	127	108	86	107	92	37	25.4	—

### 30 AMP Cast Aluminum

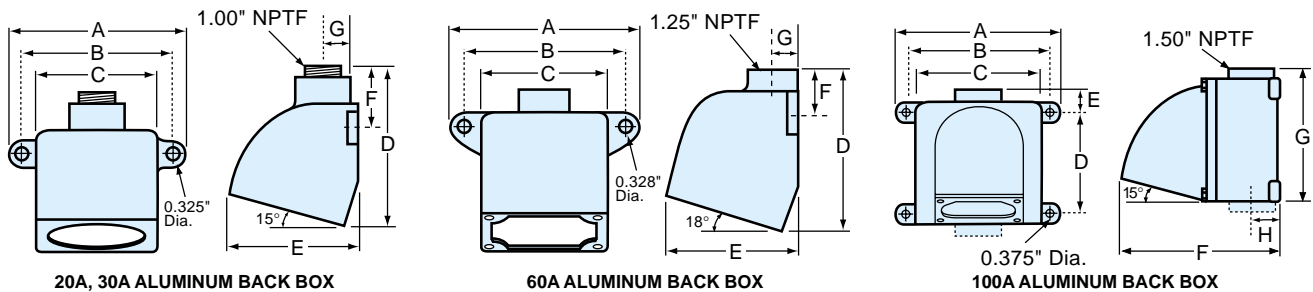
inch	5.00	4.25	3.38	4.20	3.63	1.44	1.00	—
mm	127	108	86	107	92	37	25.4	—

### 60 AMP Cast Aluminum

inch	6.38	5.38	4.25	5.50	4.56	1.375	0.9	—
mm	162	137	108	140	116	35	23	—

### 100 AMP Cast Aluminum

inch	7.81	6.89	5.88	4.88	1.03	8.00	6.38	1.19
mm	198	175	149	124	26	203	162	30



## Dimensions for Thermoplastic Back Boxes

### 20 AMP Thermoplastic, 2-pole, 3-wire

	A	B	C	D	E	F	G	H
inch	2.68	2.21	1.81	3.54	4.02	2.64	1/2"	0.71
mm	68	56	46	90	102	67	NPTF	18

### 20 AMP Thermoplastic, 3-pole, 4-wire and 4 pole, 5-wire

inch	3.50	2.95	1.81	3.94	4.53	3.23	3/4"	0.87
mm	89	74	46	100	115	82	NPTF	22

### 30 AMP Thermoplastic, All

inch	3.50	2.95	1.81	3.94	4.53	3.23	3/4"	0.87
mm	89	74	46	100	115	82	NPTF	22

### 60 AMP Thermoplastic, All

inch	4.37	3.54	2.72	4.84	7.32	4.61	1 1/4"	1.22
mm	111	90	69	123	186	117	NPTF	31

